

WindowManagement[®] solutions

U.S. Green Building Council Headquarters, Washington, D.C., WDG Architecture, photo: Larry Olsen



MechoShade Systems
The Architect's Choice

MechoShade Systems, Inc.

For four decades, the firm has been the premier designer and manufacturer of state-of-the-art manual, motorized, and automated window-shading systems and shade cloths. MechoShade Systems' commitment to eco-friendly and energy-saving products and systems has been sanctioned by a number of respected organizations.

- MBDC's Cradle to CradleSM certification program
- GEI's GREENGUARD Indoor Air Quality Certified[®] program
- GEI's GREENGUARD Children & SchoolsSM program
- *BuildingGreen's* GreenSpec[®] Top-10 Green Products list
- *Interior Design's* Best of Year Merit award winner

☛ MechoShadeSystems.com

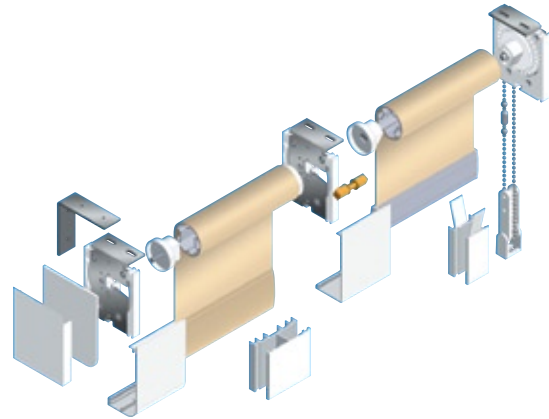
The innovative firm is a supporter of the U.S. Green Building Council (USGBC). In fact, MechoShade Systems' SolarTrac[®] automated-shade system incorporating an EcoVeil[®] shade cloth is installed in the USGBC's new LEED[®] Platinum-rated headquarters, in Washington, D.C. (See the cover of this brochure.) Likewise, architects and designers have made the systems and shade cloths, by this innovative firm, the products-of-choice in numerous buildings certified by the USGBC's LEED[®] rating system.

☛ MechoShadeSystems.com/leed

Classic Mecho[®]/5 manual system

- Heavy-duty hardware
- Patented clutch design
- 25-year non-depreciating warranty*
- Standard, SlimLine, Extended, and DoubleShade[®] brackets
- SnapLoc[®] spline and optional SnapLoc[®] fascia for the easy removal and maintenance of shade cloth bands
- Cradle to Cradle Certified^{CM} silver with EcoVeil[®] shade cloth
- *Interior Design's* Best of Year/ROSCOE Merit award
- Wide range of accessories, including fascia, pockets, closures, and side channels

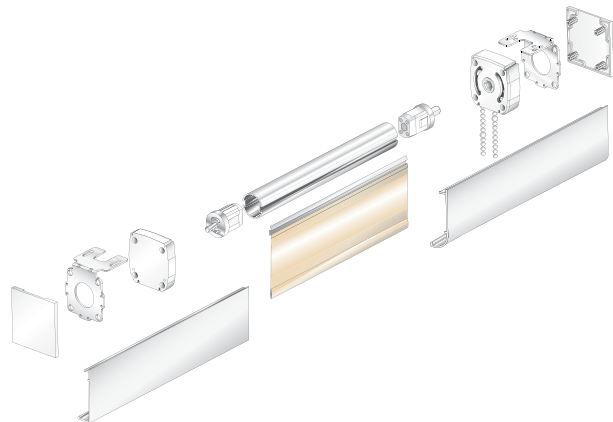
☛ MechoShadeSystems.com/mechoshade



New UrbanShadeTM manual system

- High-quality, robust components
- Compact, unobtrusive profile
- Competitively priced with a 10 year limited warranty*
- Refined design for inside-frame or surface mounting
- Blackout channels for room-darkening applications
- SnapLoc[®] spline and optional SnapLoc[®] fascia for easy removal and maintenance of shade cloth bands
- Sleek, high-impact plastic and steel brackets
- Optional upgrade from a manual to a motorized system
- Optional prefabricated cassette version, for easy installation
- Residential or commercial use

☛ MechoShadeSystems.com/urbanshade



Room-darkening and A/V applications

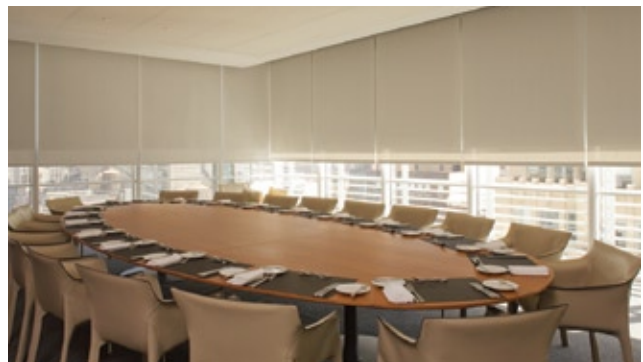
- Manual and motorized systems
- Controls, which integrate with A/V and lighting systems
- Side and sill channels for room darkening in A/V areas and mini-theaters
- Unobtrusive extrusions, which are compatible with sleek, modern, or contemporary architecture

☛ MechoShadeSystems.com/roomdarkening

Pockets and accessories

- Standard and custom-designed pocket profiles with removable closures and extruded-aluminum trim

☛ MechoShadeSystems.com/pockets



Eagle Room, The New York Times Headquarters, architecture: Renzo Piano Building Workshop with FXFowle, interior architecture: Gensler

* Contact MechoShade Systems for full warranty details.

Motorized shade systems

- Ideal for executive, conference, and training facilities and for inaccessible high-bay and expansive public areas
- Models ranging from standard shades to monumental and SkyLighter® shades
- Whisper-quiet motors
- DoubleShade® and multibanded installations
- 25-year warranty*
- SnapLoc® spline and optional SnapLoc® fascia for easy removal and maintenance of shadecloth bands

 MechoShadeSystems.com/motorizedshades

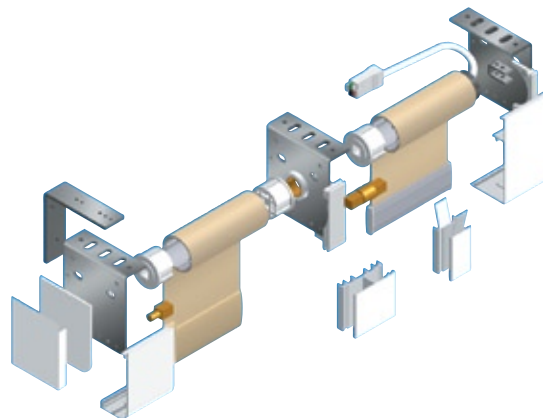


The West Midtown Intermodal Ferry Terminal, architecture: William Nicholas Bodouva & Associates, photo: Jim Roof Creative, Inc.

Classic ElectroShade® System

- Motorized roller screens
- A cost-effective solution
- Standard (40mm and 50mm) tubular motors
- Broad range of bracket configurations
- Electro®/1 and Electro®/2 shades with fascia; Electro® Extended for oversized areas, and Electro® DoubleShades®
- Optional fascia, side channels, and pocket accessories
- DoubleShade® brackets for room darkening—nesting of two tubes with a blackout shade on one tube and a sun screen on the other

 MechoShadeSystems.com/electroshade



New WhisperShade® IQ™ System

- Most whisper-quiet and powerful motors in the industry
- Built-in communications port—no relay-based controls
- Direct-connecting low-voltage IQ™ switches, which appreciably reduce wiring costs
- Embedded encoder for mid-window alignments within 1/16 in. (1.6mm)
- 25%, 50%, and 75% down or user-defined default positions
- Integration with other manufacturers' control systems through the IQ/485® Network Interface card
- ZigBee® PRO-based network integration via the MechoRF™ C4 2-Zone Interface


 MechoShadeSystems.com/whispershadeiq



IAC/InterActiveCorp, New York City, architecture: Gehry Partners, photo: Seong Kwon

WhisperShade® I-Con® two-way motor system

- Most whisper-quiet and powerful motors in the industry
- Robust, flexible, and LonWorks® based, with the logic built into the motor
- Flexible control wiring via a free-topology network
- Embedded encoder for accurate mid-window alignments within 1/16 in. (1.6mm)
- Full-up, 20%, 40%, 60%, 80% down, and full-down or user-defined default positions
- Building-management system interface
- Integration with the innovative SolarTrac® and economical SunDialer™ automated-shade systems

 MechoShadeSystems.com/whispershadeicon



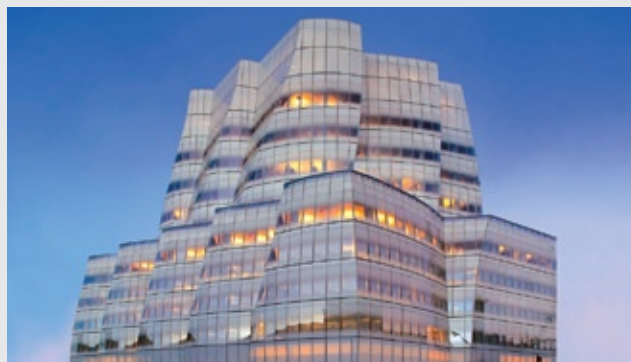
U.S. Green Building Council Headquarters, Washington, D.C., WDG Architecture, photo: Larry Olsen

* Contact MechoShade Systems for full warranty details.

Controls and integration

- The result of extensive research and development from a company with the longest history of creating control systems, which integrate with other manufacturers' A/V, lighting, and building-automation systems
- State-of-the-art design, software, and RF technology
- The industry's most advanced control capabilities
- Formal integration partnerships with Crestron®, AMX®, Control4®, and others
- Integration capability with Lutron® Electronics, Leviton® Manufacturing Co., Lightolier® Controls, and others

 MechoShadeSystems.com/electroniccontrolsystems

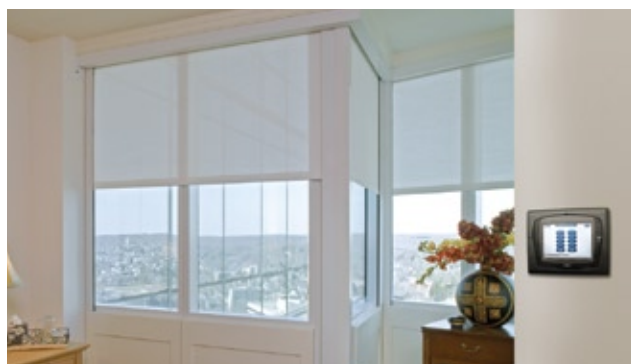


IAC/InterActiveCorp, New York City, architecture: Gehry Partners, photo: Seong Kwon

WhisperShade® IQ™ or IQ/MLC® motor controller

- Shade controls to operate four motors (IQ/MLC®) or one motor (IQ/SMC) for cost-effective roller-shade systems
- Open architecture, which allows for the control of most standard tubular motors
- Low-voltage, dry-contact control for the multi-level operation of master, group, and individual motors
- Full up, 25%, 50%, 75%, and full down or user-defined positions
- Accessories for numerous user-interface and control possibilities

 MechoShadeSystems.com/electroniccontrolsystems

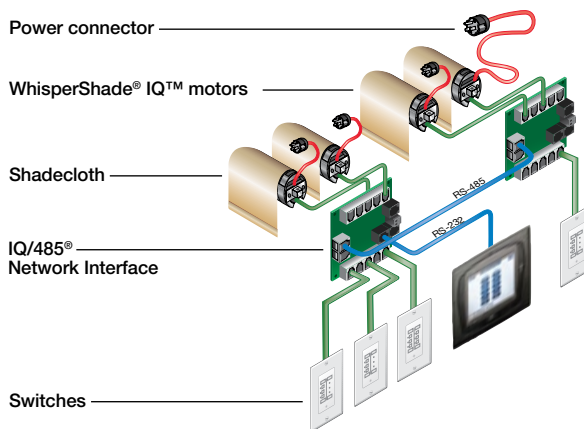


The Residences at The Ritz-Carlton, White Plains, N.Y., Cappelli Enterprises, Inc.

IQ/485® — two-way communication

- Integration with A/V, lighting, and building-automation systems via RS-232 and Internet protocols
- RS-485 bus-network solutions, integration, and automation
- Control of WhisperShade® IQ™ motors and WhisperTrac™ motorized drapery-track system
- Control of standard motors with the IQ/MLC®
- Two-way, RS-485-based communication with the IQ/SMC
- Accessories include RF receivers and transmitters, photo-sensors, a seven-day timer, key switches, and infrared receivers
- Manual switches that are software addressable to any shade device on the network

 MechoShadeSystems.com/electroniccontrolsystems



Wireless solutions

- RTS control, direct-to-motor with a wireless radio-frequency controller
- MechoRF™ and wireless ZigBee® PRO-based spectrum mesh technology, which was integrated first in North America with window-covering and drapery systems by MechoShade Systems in partnership with Control4®, the whole-home automation manufacturer

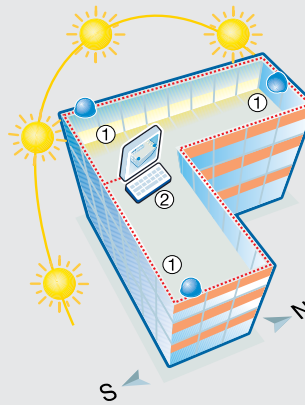
 MechoShadeSystems.com/electroniccontrolsystems



CityCenter™, Las Vegas, architecture: Foster, Gensler, Jahn, KPF, Libeskind, Pelli, Rockwell, and Viñoly

Automation

- WindowManagement®, the prerequisite to daylighting
 - The most experienced manufacturer of solar-shade automation solutions
 - Original projects, ranging from California's 1979 Gregory Bateson State Office Building to the present headquarters of The New York Times and the LEED® Platinum-rated U.S. Green Building Council in Washington, D.C.
 - State-of-the-art PC-based and programmable controller-based systems: SolarTrac®, a building-management system for automated shading, and SunDialer™, an economical, award-winning solar controller
- MechoShadeSystems.com/automation

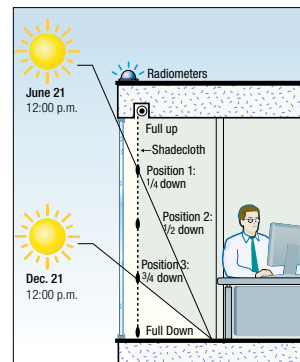


- ① Three roof-mounted radiometers provide data to determine actual sky conditions in real time, no matter if conditions are sunny or cloudy.
- ② Local switches or touch screens can override the system. When this occurs, the system will regain control at 5 a.m. the next morning.

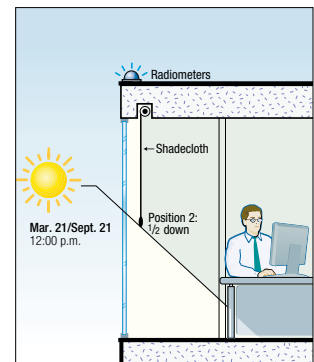
SolarTrac® — the elite WindowManagement® system

- PC-based software, programmed for the optimal control of window coverings
- Maximized views to the outside, optimal use of natural light, and protection from direct solar gain and intense glare
- Up to 70% saving in lighting energy in conjunction with a dimmable lighting system
- Data logging and performance, reported by occupants, to continuously improve the system over time
- Digitally addressable WhisperShade® I-Con® motors, which communicate via a robust LonWorks®-based network
- Zones programmed according to a building's geometry, orientation, function, and glazing
- User-defined shade positions for each zone, determined by the profile angle of the sun, allowable solar penetration, and sky conditions
- Assurance of uniform shade alignment, providing a clean aesthetic on a building's façade
- Optional user-module Virtual Switch to eliminate the necessity of physical switches or touch screens
- Optional Brightness-Override Module, ideal for controlling the intense glare resulting from low-iron and other glazing
- Optional Shadow-Override Module, to raise shades when shadows are cast from surrounding buildings

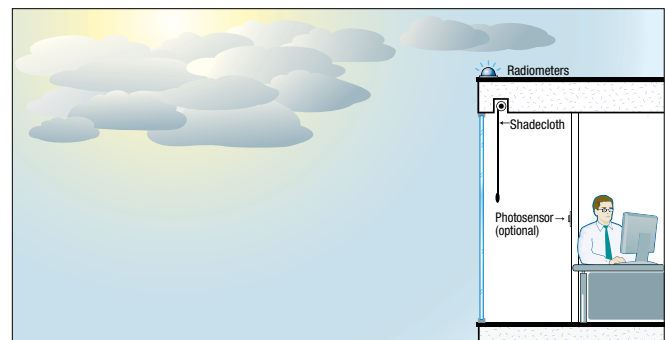
MechoShadeSystems.com/solartrac



Allowable solar penetration
summer/winter: June 21/Dec. 21



Allowable solar penetration
spring/fall: Mar. 21/Sept. 21



Overcast-sky condition with the Brightness-Override Module

SunDialer™ — the economical WindowManagement® system

- Ideal for small-scale and retrofitted projects
- 12-zone controller, integrated with radiometers and WhisperShade® I-Con® motors
- Solar-tracking and sky-monitoring features, similar to those of SolarTrac®
- Events scheduler for regularly timed or one-off shade positions
- Historical log for reporting and reviewing the shade positioning
- Optional Web-accessible Internet-protocol interface


MechoShadeSystems.com/sundialer

I-Con® Gateway
+ IP Interface



The shadecloth collection

- Exclusively engineered, laboratory tested, award winning
- Effective performance with discrete types of glazing
- Over 200 styles, colors, patterns, and weaves
- Antimicrobial and/or antifungal characteristics for most shadecloths
- EcoVeil®, sustainable and Cradle Certified™ shadecloths
- GREENGUARD® certification for most fabrications
- Bogota, Oeko-Tex® Standard 100 Certified shadecloths
- AcoustiVeil™, acoustically absorptive shadecloths
- Blackout, dimout, film, and other specialty materials
- Diverse range of traditional, contemporary, designer, and eco-friendly shadecloths
- Custom-color program for large-scale projects

 MechoShadeSystems.com/shadecloth



Blackout, Dimout, and Film—specialty materials including transparent film and tightly woven shadecloths:

- Equinox™ Blackout 0100 Series, opaque; 12 colors available



- Midnite™ Blackout 0200 Series, opaque; nine colors available



- MirroFilm™ 0600 Series, transparent Mylar® for DualShades®; two colors available



- Classic Blackout 0700 Series, opaque; seven colors available



- AcoustiVeil™ Dimout 0890 Series, 0-1% open; three colors available



G = ThermoVeil® Basket Weaves—2 x 2 basket-weave shadecloths:

- ThermoVeil® Dense Basket Weave 1300 Series, approx. 5% open; eight colors available



- ThermoVeil® Dense Basket Weave 1500 Series, approx. 3% open; eight colors available



- ThermoVeil® Open Basket Weave 2100 Series, approx. 10% open; eight colors available



G = ThermoVeil® Vertical and Satin/Diamond Weaves—technically advanced and lineally woven shadecloths:

- ThermoVeil® Vertical Privacy Weave 0900 Series, 0-1% open; six colors available



- ThermoVeil® Dense Vertical Weave 1000 Series, 2-3% open; six colors available



- ThermoVeil® Reversible Satin/Diamond Weave 3000, 3200, and 3300 Series, 1-2% open; 13 colors available



G = EuroVeil® and EuroTwill®—soft and finely woven shadecloths:

- EuroVeil® Basket Weave 5300 Series, approx. 5% open; 12 colors available



- EuroTwill® Reversible Weave 6000 Series, approx. 3% open; 13 colors available



- EuroTwill® Reversible Weave 6200 Series, approx. 2% open; five colors available



- EuroTwill® Reversible Broken Weave 6450 Series, approx. 3% open; nine colors available



G = Designer Collection—distinctive, colorful, and textured shadecloths:

- Designer Collection: Oxford Row 5100 Series, 5-6% open; six colors available



- Designer Collection: Classic Twill Weave 5200 Series, 5-6% open; four colors available



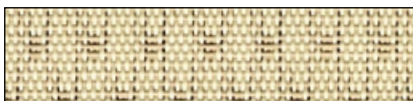
- Designer Collection: Antique Linen 5400 Series, approx. 5% open; six colors available



- Designer Collection: Sarah 8200 Series, approx. 3% open; five colors available



- Designer Collection: Dot 8300 Series, approx. 2% open; five colors available



- Designer Collection: Orchid 8400 Series, approx. 3% open; five colors available



- Designer Collection: Bamboo 8600 Series, 12–13% open; six colors available



- Designer Collection: Swirl 8700 Series, approx. 3% open; five colors available



Bogota Series—FR, PVC-free, and Oeko-Tex® Standard 100 Certified shade cloths:

- Bogota Aluminum Back 0500 Series, approx. 5% open; five colors available



- Bogota 0550 Series, approx. 5% open; five colors available



G = EcoVeil® Series—100% recyclable, FR, and PVC-free shade cloths

- Inspired by McDonough and Braungart's book *Cradle to Cradle: Remaking the Way We Make Things*

- An eco-effective shade cloth, which can be reclaimed and recycled

- The first environmentally-certified product of its kind

- With a manual Mecho®/5 shade, the first complete window-treatment to become Cradle to Cradle Certified™ silver

MechoShadeSystems.com/ecoveil

Received two 2009 Best of NeoCon® Silver awards for the EcoVeil® Naturals

BuildingGreen's GreenSpec® Top-10 Green Products list

- EcoVeil® Screens 0950 Series, approx. 1% open; eight colors available



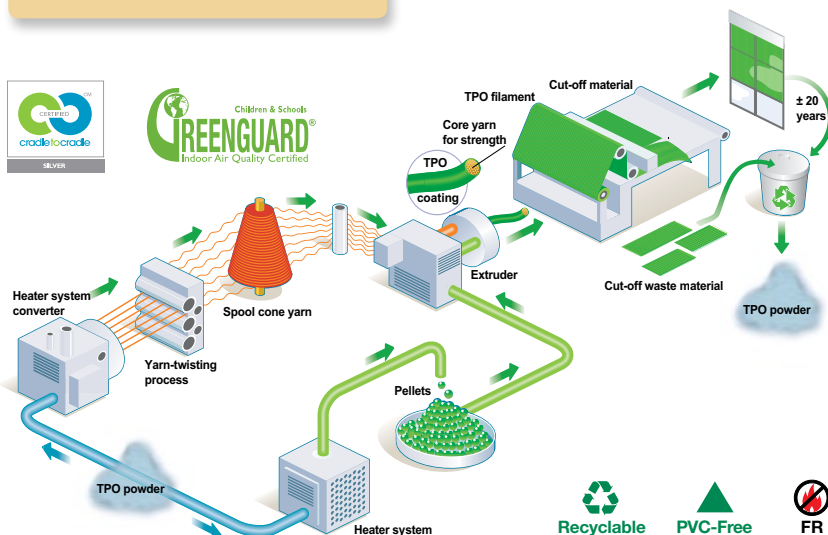
- EcoVeil® Screens 1350 Series, approx. 5% open; eight colors available



- EcoVeil® Screens 1550 Series, approx. 3% open; eight colors available



- EcoVeil® Naturals 8050 Series, 1–2% open; eight colors available



The closed-loop manufacturing cycle of this TPO (thermoplastic olefin) based material allows for EcoVeil® to be repolymerized and woven again into a new shade cloth or made into something else—endlessly.



New EcoVeil® Naturals

Specialty shades

- A full spectrum of shading solutions
- Configurations and models for atypical fenestration where unusual shade geometries are mandated
- Ideal when the requirements veer from standard design paradigms
- Suitable for sloped, large, and stationary conditions for shades and wide, curved expanses for draperies
- Technically advanced automation features
- Every window configuration soundly accommodated to offer protection from direct solar gain and intense glare

 MechoShadeSystems.com/specialtyshades



SkyLighter® shades, St. John's Bread and Life, Brooklyn, N.Y.,
Rogers Marvel Architects

Monumental shades

- An adaptive shading system
- Necessary for effective shading in areas with very large windows, which can be accommodated up to 50 ft. (15m) wide and 40 ft. (12m) tall
- Usage of powerful ElectroShade® motors

DualShades®

- Unique two-layer insulating system, which includes a solar-screen material on the room side and tinted MirroFilm™ Mylar® or a blackout material on the window side
- A single tube accommodates the double-layer band with a SnapLoc® spline for easy removal

Bottom-up shades

- A flexible design, operating in the same manner—with a roller tube—as other MechoShade Systems' sun-screen systems
- Necessary for the privacy requirements on lower floors, especially the ground floor of a building
- Side-guide wires to map shades of all shapes and sizes

Sloped shades

- Distinct and effective
- Side-guide wires with a roller tube—like bottom-up shades—to map a shade's movement and ensure it follows a slope precisely
- Smooth operation for either a flat or a soft-fold shade cloth

SkyLighter® shades

- Well-engineered shading system to reduce heat and glare, which normally and undesirably enters through skylights
- Flat or soft-folded alternative when fully drawn closed
- Effective and stylish system appropriate for a wide range of shapes, angles, and sizes

Fixed shades

- Static, yet flexible window covering with essentially no restrictions on the choice of shadecloth or window geometry
- Solar protection and natural-light distribution in circumstances, which cannot be served by traditional roller shades

PanelTrac™

- Horizontally traversing shadecloth panels
- Smooth and efficient operation
- A simple and clean alternative to roller shades
- Functional as a room or area divider as well as a window covering

WhisperTrac™ motorized drapery-track system

- A sophisticated system with a choice of two whisper-quiet, powerful motors, controlled via IR, RS-232, RS-485, IQ® switches, or a ZigBee® PRO-based MechoRF™ receiver
- Heavy-weight C.O.M. fabric up to 58 ft. (17.7m) long
- Curvable track to industry's tightest radius—8 in. (20cm)



MechoShade Systems, Inc.

Corporate Headquarters
42-03 35th Street
Long Island City, NY 11101
T: +1 (718) 729-2020
F: +1 (718) 729-2941
info@mechoshade.com
MechoShadeSystems.com

Shadecloth samples

F: (800) 899-8081
samples@mechoshade.com

Copyright © 2010 MechoShade Systems, Inc. Trademarks and registrations, as noted, are the exclusive property of MechoShade Systems, Inc., and others, as noted, are the property of various firms. All rights are reserved for usage of the images, text, and content herein; permission for use by others must be granted in writing by MechoShade Systems. This literature was printed on post-consumer paper with soy-based ink.



L10005.0809